

# 0151.2008 - CAM SUPER-SMEG2008

FORZA INIZIALE DI ESTRAZIONE / INITIAL EXTRACTION FORCE **2000 daN**

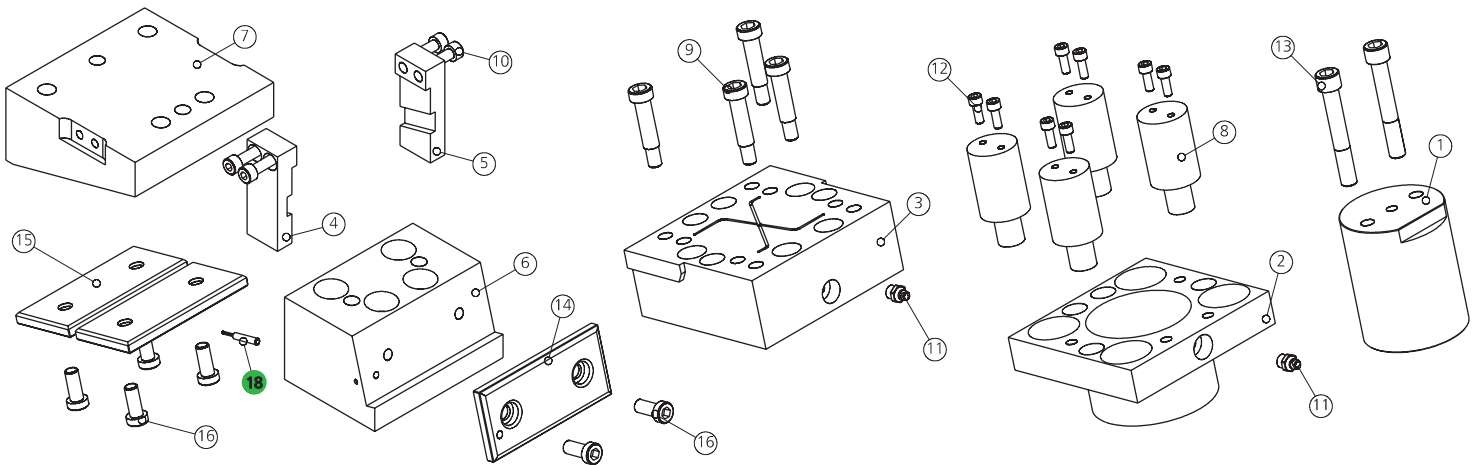
RÜCKZUGSKRAFT / FORCE INITIALE D'EXTRACTION

FORZA FINALE DI ESTRAZIONE / FINAL FORCE OF EXTRACTION **2700 daN**

ENDKRAFT DER EXTRACTION / FORCE FINALE D'EXTRACTION

SFORZO MAX TRANCIO **20000 daN**

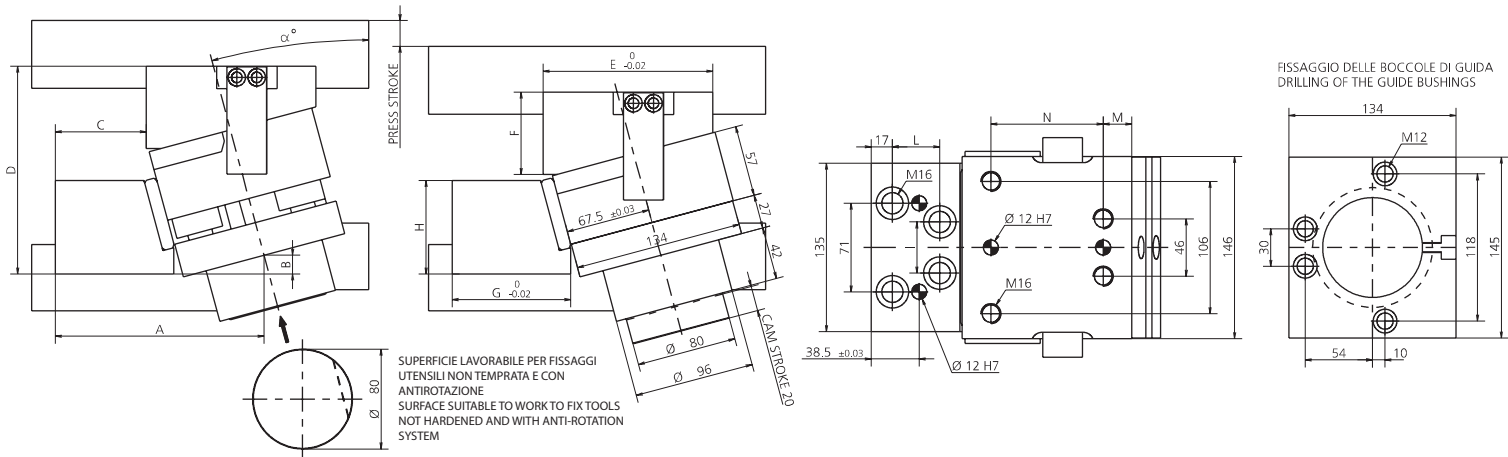
CUTTING MAX FORCE  
MAXIMALE SCHNITTKRAFT  
EFFORT MAXI DÉCOUPE



POS.	CODE	DESCRIPTION	Q.TY
001	<b>8018.1000.0000.800.001</b>	PERNO CENTRALE / CENTRAL PIN / HAUPTSTIFT	1
002	<b>8013.0690.0960.800.001</b>	BOCCOLA DI GUIDA / GUIDE BUSHINGS / FÜHRUNGSBUCHSE	1
003	<b>8014.0051.2008</b>	PORTA PUNZONE / PUNCHES HOLDER / TRÄGERPLATTE	1
004	<b>8115.4851.1808.05.001</b>	STAFFA DI AGGANCIAMENTO / BRACKET ATTACHMENTS / BRACKETBEFESTIGUNG 5°	1*CHOOSE
004	<b>8115.4851.1808.10.001</b>	STAFFA DI AGGANCIAMENTO / BRACKET ATTACHMENTS / BRACKETBEFESTIGUNG 10°	1*CHOOSE
004	<b>8115.4851.1808.15.001</b>	STAFFA DI AGGANCIAMENTO / BRACKET ATTACHMENTS / BRACKETBEFESTIGUNG 15°	1*CHOOSE
004	<b>8115.4851.1808.20.001</b>	STAFFA DI AGGANCIAMENTO / BRACKET ATTACHMENTS / BRACKETBEFESTIGUNG 20°	1*CHOOSE
004	<b>8115.4851.1808.25.001</b>	STAFFA DI AGGANCIAMENTO / BRACKET ATTACHMENTS / BRACKETBEFESTIGUNG 25°	1*CHOOSE
004	<b>8115.4851.1808.30.001</b>	STAFFA DI AGGANCIAMENTO / BRACKET ATTACHMENTS / BRACKETBEFESTIGUNG 30°	1*CHOOSE
004	<b>8115.4851.1808.35.001</b>	STAFFA DI AGGANCIAMENTO / BRACKET ATTACHMENTS / BRACKETBEFESTIGUNG 35°	1*CHOOSE
004	<b>8115.4851.1808.40.001</b>	STAFFA DI AGGANCIAMENTO / BRACKET ATTACHMENTS / BRACKETBEFESTIGUNG 40°	1*CHOOSE
004	<b>8115.4851.1808.45.001</b>	STAFFA DI AGGANCIAMENTO / BRACKET ATTACHMENTS / BRACKETBEFESTIGUNG 45°	1*CHOOSE
004	<b>8115.4851.1808.50.001</b>	STAFFA DI AGGANCIAMENTO / BRACKET ATTACHMENTS / BRACKETBEFESTIGUNG 50°	1*CHOOSE
005	<b>8115.4851.1808.05.002</b>	STAFFA DI AGGANCIAMENTO / BRACKET ATTACHMENTS / BRACKETBEFESTIGUNG 5°	1*CHOOSE
005	<b>8115.4851.1808.10.002</b>	STAFFA DI AGGANCIAMENTO / BRACKET ATTACHMENTS / BRACKETBEFESTIGUNG 10°	1*CHOOSE
005	<b>8115.4851.1808.15.002</b>	STAFFA DI AGGANCIAMENTO / BRACKET ATTACHMENTS / BRACKETBEFESTIGUNG 15°	1*CHOOSE
005	<b>8115.4851.1808.20.002</b>	STAFFA DI AGGANCIAMENTO / BRACKET ATTACHMENTS / BRACKETBEFESTIGUNG 20°	1*CHOOSE
005	<b>8115.4851.1808.25.002</b>	STAFFA DI AGGANCIAMENTO / BRACKET ATTACHMENTS / BRACKETBEFESTIGUNG 25°	1*CHOOSE
005	<b>8115.4851.1808.30.002</b>	STAFFA DI AGGANCIAMENTO / BRACKET ATTACHMENTS / BRACKETBEFESTIGUNG 30°	1*CHOOSE
005	<b>8115.4851.1808.35.002</b>	STAFFA DI AGGANCIAMENTO / BRACKET ATTACHMENTS / BRACKETBEFESTIGUNG 35°	1*CHOOSE
005	<b>8115.4851.1808.40.002</b>	STAFFA DI AGGANCIAMENTO / BRACKET ATTACHMENTS / BRACKETBEFESTIGUNG 40°	1*CHOOSE
005	<b>8115.4851.1808.45.002</b>	STAFFA DI AGGANCIAMENTO / BRACKET ATTACHMENTS / BRACKETBEFESTIGUNG 45°	1*CHOOSE
005	<b>8115.4851.1808.50.002</b>	STAFFA DI AGGANCIAMENTO / BRACKET ATTACHMENTS / BRACKETBEFESTIGUNG 50°	1*CHOOSE

POS.	CODE	DESCRIPTION	Q.TY
006	<b>8117.4851.1808.05.001</b>	GUIDA / GUIDE / FÜHRUNG 5°	1*CHOOSE
006	<b>8117.4851.1808.10.001</b>	GUIDA / GUIDE / FÜHRUNG 10°	1*CHOOSE
006	<b>8117.4851.1808.15.001</b>	GUIDA / GUIDE / FÜHRUNG 15°	1*CHOOSE
006	<b>8117.4851.1808.20.001</b>	GUIDA / GUIDE / FÜHRUNG 20°	1*CHOOSE
006	<b>8117.4851.1808.25.001</b>	GUIDA / GUIDE / FÜHRUNG 25°	1*CHOOSE
006	<b>8117.4851.1808.30.001</b>	GUIDA / GUIDE / FÜHRUNG 30°	1*CHOOSE
006	<b>8117.4851.1808.35.001</b>	GUIDA / GUIDE / FÜHRUNG 35°	1*CHOOSE
006	<b>8117.4851.1808.40.001</b>	GUIDA / GUIDE / FÜHRUNG 40°	1*CHOOSE
006	<b>8117.4851.1808.45.001</b>	GUIDA / GUIDE / FÜHRUNG 45°	1*CHOOSE
006	<b>8117.4851.1808.50.001</b>	GUIDA / GUIDE / FÜHRUNG 50°	1*CHOOSE
007	<b>8116.4851.1808.05.001</b>	INCUDINE / ANVIL / TREIBER 5°	1*CHOOSE
007	<b>8116.4851.1808.10.001</b>	INCUDINE / ANVIL / TREIBER 10°	1*CHOOSE
007	<b>8116.4851.1808.15.001</b>	INCUDINE / ANVIL / TREIBER 15°	1*CHOOSE
007	<b>8116.4851.1808.20.001</b>	INCUDINE / ANVIL / TREIBER 20°	1*CHOOSE
007	<b>8116.4851.1808.25.001</b>	INCUDINE / ANVIL / TREIBER 25°	1*CHOOSE
007	<b>8116.4851.1808.30.001</b>	INCUDINE / ANVIL / TREIBER 30°	1*CHOOSE
007	<b>8116.4851.1808.35.001</b>	INCUDINE / ANVIL / TREIBER 35°	1*CHOOSE
007	<b>8116.4851.1808.40.001</b>	INCUDINE / ANVIL / TREIBER 40°	1*CHOOSE
007	<b>8116.4851.1808.45.001</b>	INCUDINE / ANVIL / TREIBER 45°	1*CHOOSE
007	<b>8116.4851.1808.50.001</b>	INCUDINE / ANVIL / TREIBER 50°	1*CHOOSE
008	<b>9000.0025.0038.001</b>	CILINDRO AD AZOTO / NITROGEN CYLINDER / STICKSTOFFZYLINDER	4
009	<b>9008.1012.040</b>	VITE A COLLETTA / SHOULDER SCREW / ANSATZSCHRAUBE	4
010	<b>9007.08.030.129.1.4762</b>	VITE / SCREW / SCHRAUBE M8X30	4
011	<b>9006.002</b>	INGRASSATORE / NIPPLES / SCHMIERUNG	2
012	<b>9007.06.016.129.1.4762</b>	VITE / SCREW / SCHRAUBE M6X16	8
013	<b>9007.12.055.129.1.4762</b>	VITE / SCREW / SCHRAUBE M12X55	2
014	<b>8012.1250.0580.100.003</b>	PIASTRA DI SCORRIMENTO / WEAR PLATE / DRUCKPLATTE	1
015	<b>9012.1250.0580.100.001</b>	PIASTRA DI SCORRIMENTO / WEAR PLATE / DRUCKPLATTE	2
016	<b>9007.10.020.129.1.9327</b>	VITE / SCREW / SCHRAUBE M10X20	6
018	<b>9003.0001</b>	SENSORE DI SICUREZZA / SECURITY SENSOR / SENSOR FÜR SICHERHEIT	1*OPTION

FORZA INIZIALE DI ESTRAZIONE / INITIAL EXTRACTION FORCE **2000 daN** SFORZO MAX TRANCIO **20000 daN**  
 RÜCKZUGSKRAFT / FORCE INITIALE D'EXTRACTION  
 FORZA FINALE DI ESTRAZIONE / FINAL FORCE OF EXTRACTION **2700 daN** CUTTING MAX FORCE  
 ENDKRAFT DER EXTRAKTION / FORCE FINALE D'EXTRACTION MAXIMALE SCHNITTKRAFT  
 EFFORT MAXI DÉCOUPE



$\alpha^\circ$	PRESS STROKE	A	B	C	D	E	F	G	H	I	L	M	N
5°	20.1	165.85	74.9	87	155.1	136	56	95	75	41	43	23	90
10°	20.3	166.85	66.9	80	156.35	136	56	95	75	41	43	23	90
15°	20.7	167.35	59.9	73	166.65	136	51	95	75	41	38	23	90
20°	21.3	178.35	50.9	80.5	168.2	125	76	105	65	41	43	17.5	90
25°	22.05	177.35	43.9	71.5	166.95	125	76	105	65	41	38	17.5	90
30°	23.1	186.35	36.9	72.5	180.5	125	90	115	65	41	43	17.5	90
35°	24.4	185.35	26.9	71	189.9	116	96	115	65	41	43	23	70
40°	26.1	182.35	19.9	64.5	200.55	115	106	115	65	41	38	22.5	70
45°	28.3	180.35	8.9	59.5	211.7	105	116	115	65	37	35	17.5	70
50°	31.1	176.35	-1.1	48.5	215.55	105	125	115	56	37	35	17.5	70

\* PER INCLINAZIONI FUORI STANDARD RIVOLGERSI ALL'UFFICIO TECNICONESTARK / \* FOR NON-STANDARD INCLINATIONS, PLEASE CONTACT NEWSTARK TECHNICAL OFFICE.  
 / \* FÜR NICHT STANDARDMÄSSIGE NEIGUNGEN WENDEN SIE SICH BITTE AN DAS TECHNISCHE BÜRO VON NEWSTARK

018 (9003) SENSORE / SENSOR / SENSOR



**18** PATENT PENDING