

# 0140.0210 - CAM M210

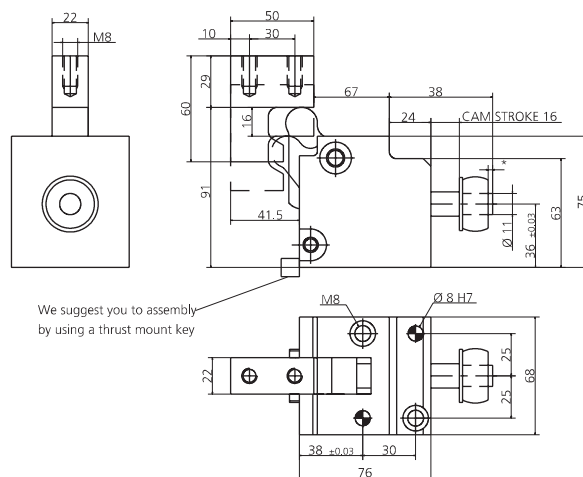
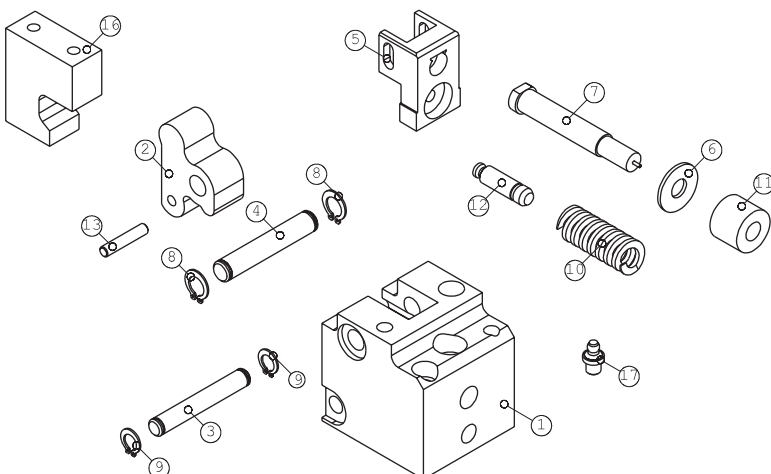
FORZA INIZIALE DI ESTRAZIONE / INITIAL EXTRACTION FORCE **40 daN**  
RÜCKZUGSKRAFT / FORCE INITIALE D'EXTRACTION

FORZA FINALE DI ESTRAZIONE / FINAL FORCE OF EXTRACTION **210 daN**  
ENDKRAFT DER EXTRACTION / FORCE FINALE D'EXTRACTION

SFORZO MAX TRANCIO **3000 daN**  
CUTTING MAX FORCE

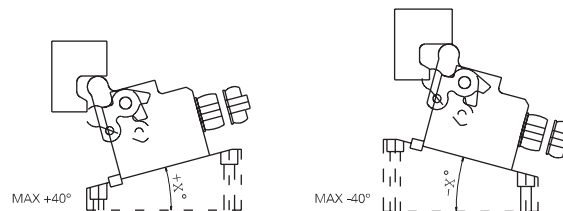
MAXIMALE SCHNITTKRAFT  
EFFORT MAXI DÉCOUPE

\* MAX 30% LUNGHEZZA LIBERA

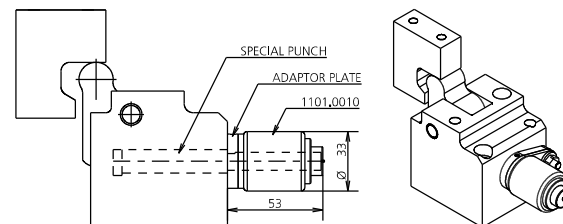


POS.	CODE	DESCRIPTION	Q.TY
001	<b>8000.0040.0210</b>	CORPO CAMMA / CAM BODY / GRUNDGEHÄUSE	1
002	<b>8001.4041.0210.000</b>	LEVA / LEVER / NOCKE 0	1
002	<b>8001.4041.0210.620</b>	LEVA / LEVER / NOCKE +0.01 +20	1*OPTION
002	<b>8001.4041.0210.640</b>	LEVA / LEVER / NOCKE +20.01 +40	1*OPTION
002	<b>8001.4041.0210.720</b>	LEVA / LEVER / NOCKE -0.01 -20	1*OPTION
002	<b>8001.4041.0210.730</b>	LEVA / LEVER / NOCKE -20.01 -30	1*OPTION
002	<b>8001.4041.0210.740</b>	LEVA / LEVER / NOCKE -30.01 -40	1*OPTION
003	<b>8005.0680.0640.100.001</b>	PERNO / PIN / STIFT	1
004	<b>8005.0680.0640.120.001</b>	PERNO / PIN / STIFT	1
005	<b>8014.4041.0210</b>	PORTA PUNZONE / GATE PUNCH / STEMPHALTEPLATTE	1
006	<b>8006.0020.0280.111.001</b>	RONDELLA / WASHER / UNTERLEGSCHIBE	1
007	<b>09MJBM2.130.085</b>	MJB_PUNZONE TC CON ESPULSORE / HEADED PUNCH WITH EJECTOR / SCHNEIDSTEMPEL MIT ABSTOSSER 13 85.5	1
007	<b>09MJXM2.130.085</b>	MJX_PUNZONE TC CON ESPULSORE / HEADED PUNCH WITH EJECTOR / SCHNEIDSTEMPEL MIT ABSTOSSER 13 85.5	1*OPTION
007	<b>09MJOM2.130.085</b>	MJO_PUNZONE TC CON ESPULSORE / HEADED PUNCH WITH EJECTOR / SCHNEIDSTEMPEL MIT ABSTOSSER 13 85.5	1*OPTION
007	<b>09MJJM2.130.085</b>	MJJ_PUNZONE TC CON ESPULSORE / HEADED PUNCH WITH EJECTOR / SCHNEIDSTEMPEL MIT ABSTOSSER 13 85.5	1*OPTION
007	<b>09MJHM2.130.085</b>	MJH_PUNZONE TC CON ESPULSORE / HEADED PUNCH WITH EJECTOR / SCHNEIDSTEMPEL MIT ABSTOSSER 13 85.5	1*OPTION
007	<b>09MJKM2.130.085</b>	MJK_PUNZONE TC CON ESPULSORE / HEADED PUNCH WITH EJECTOR / SCHNEIDSTEMPEL MIT ABSTOSSER 13 85.5	1*OPTION
007	<b>09MJNM2.130.085</b>	MJN_PUNZONE TC CON ESPULSORE / HEADED PUNCH WITH EJECTOR / SCHNEIDSTEMPEL MIT ABSTOSSER 13 85.5	1*OPTION
007	<b>09MJLM2.130.085</b>	MJL_PUNZONE TC CON ESPULSORE / HEADED PUNCH WITH EJECTOR / SCHNEIDSTEMPEL MIT ABSTOSSER 13 85.5	1*OPTION
007	<b>09MJRM2.130.085</b>	MJR_PUNZONE TC CON ESPULSORE / HEADED PUNCH WITH EJECTOR / SCHNEIDSTEMPEL MIT ABSTOSSER 13 85.5	1*OPTION
007	<b>09MJVM2.130.085</b>	MJV_PUNZONE TC CON ESPULSORE / HEADED PUNCH WITH EJECTOR / SCHNEIDSTEMPEL MIT ABSTOSSER 13 85.5	1*OPTION
007	<b>09MJYM2.130.085</b>	MJY_PUNZONE TC CON ESPULSORE / HEADED PUNCH WITH EJECTOR / SCHNEIDSTEMPEL MIT ABSTOSSER 13 85.5	1*OPTION
007	<b>09MJZM2.130.085</b>	MJZ_PUNZONE TC CON ESPULSORE / HEADED PUNCH WITH EJECTOR / SCHNEIDSTEMPEL MIT ABSTOSSER 13 85.5	1*OPTION
008	<b>9004.1120.001</b>	SEGER / SEGER / SEEGERRING	2
009	<b>9004.1100.001</b>	SEGER / SEGER / SEEGERRING	2
010	<b>9009.2000.0510.200</b>	MOLLA / SPRING / FEDER	1
011	<b>9010.1125.020.E090.001</b>	MOLLA IN GOMMA / RUBBER SPRING / ABSTREIFFEDER	1
012	<b>8005.0385.0250.100.001</b>	PERNO / PIN / STIFT	1
013	<b>8005.0310.0310.060.001</b>	PERNO / PIN / STIFT	1
016	<b>8003.0600.0500.220.001</b>	INCUDINE / ANVIL / TREIBER	1*OPTION
017	<b>9006.002</b>	INGRASSATORE / NIPPLE / SCHMIERUNG	1

002 (8001) LEVA / LEVER / NOCKE

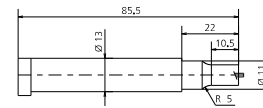


8124.0140.0210 KIT ADATTAMENTO STARK STRIPPER / STARK-STRIP ADAPTION KIT / STARK-STRIP ADAPTIONSSATZ

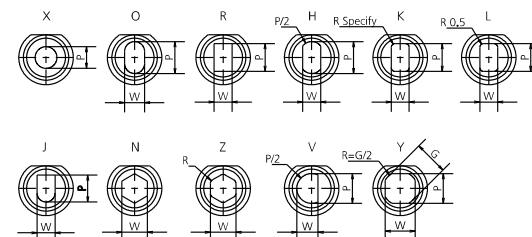
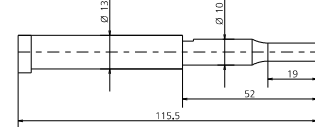


Il kit comprende il punzone, la piastrina di adattamento e le viti di fissaggio.  
Lo stark-stripper va ordinato a parte (vedi la sezione del catalogo dedicata)  
The kit includes the punch, the adapter plate and the fixing screws.  
The stark-stripper must be ordered separately (see the dedicated catalog section)  
Das Kit enthält den Stempel, die Adapterplatte und die Befestigungsschrauben.  
Der Stark-muss separat bestellt werden (siehe den entsprechenden Abschnitt des Katalogs)

007 (09M) PUNZONE TC / HEADED PUNCH / SCHNEIDSTEMPEL ISO8020



007 (09S) PUNZONE SPECIALE PER KIT 8124 / SPECIAL PUNCH FOR KIT 8124 / SPEZIALSTEMPEL FÜR BAUSATZ 8124



MODELLO D'ORDINE / ORDER EXAMPLE / BESTELLBEISPIEL / MODÈLE DE COMMANDE

MODEL **0140.0210** INCLINAZIONE **+10°** OPTION CODE **8001.4041.0210.620**